



**Scilio**  
**"PHIALE"**  
***Etna Rosso***

90% Nerello Mascalese  
10% Nerello Cappuccio  
Grown on the north face of Mount Etna; 65% of the juice is aged in small French oak barrels with the other 35% in American oak, for 12 months. The result: a complex nose of fruit and perfume, with a taste that is unctuously delicious, suggestive of black cherries, chocolate leather and cedar.



**Scilio**  
**"PHIALE"**  
***Etna Rosso***

90% Nerello Mascalese  
10% Nerello Cappuccio  
Grown on the north face of Mount Etna; 65% of the juice is aged in small French oak barrels with the other 35% in American oak, for 12 months. The result: a complex nose of fruit and perfume, with a taste that is unctuously delicious, suggestive of black cherries, chocolate leather and cedar.



**Scilio**  
**"PHIALE"**  
***Etna Rosso***

90% Nerello Mascalese  
10% Nerello Cappuccio  
Grown on the north face of Mount Etna; 65% of the juice is aged in small French oak barrels with the other 35% in American oak, for 12 months. The result: a complex nose of fruit and perfume, with a taste that is unctuously delicious, suggestive of black cherries, chocolate leather and cedar.



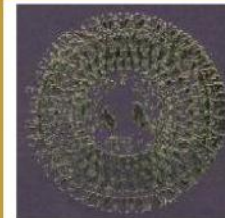
**Scilio**  
**"PHIALE"**  
***Etna Rosso***

90% Nerello Mascalese  
10% Nerello Cappuccio  
Grown on the north face of Mount Etna; 65% of the juice is aged in small French oak barrels with the other 35% in American oak, for 12 months. The result: a complex nose of fruit and perfume, with a taste that is unctuously delicious, suggestive of black cherries, chocolate leather and cedar.



**Scilio**  
**"PHIALE"**  
***Etna Rosso***

90% Nerello Mascalese  
10% Nerello Cappuccio  
Grown on the north face of Mount Etna; 65% of the juice is aged in small French oak barrels with the other 35% in American oak, for 12 months. The result: a complex nose of fruit and perfume, with a taste that is unctuously delicious, suggestive of black cherries, chocolate leather and cedar.



**Scilio**  
**"PHIALE"**  
***Etna Rosso***

90% Nerello Mascalese  
10% Nerello Cappuccio  
Grown on the north face of Mount Etna; 65% of the juice is aged in small French oak barrels with the other 35% in American oak, for 12 months. The result: a complex nose of fruit and perfume, with a taste that is unctuously delicious, suggestive of black cherries, chocolate leather and cedar.

